

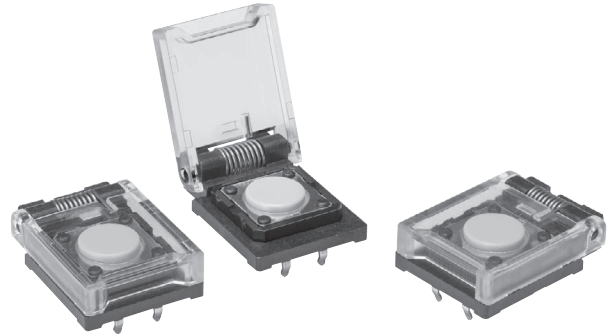
## Tactile Switch with protective cover

## B3F-8000 (N)

**Security oriented Tactile Switch by the protective cover.**

- Protect cover promises no switch operation without any intentions.
- Protect cover returned to "close" position by spring.

RoHS Compliant



### List of Model

Type	Model
Tactile Switch with protective cover	B3F-8000 (N)

**Note:** The Switches are packed in boxes. The minimum order unit is 200 Switches per box. Order in multiples of the packing quantity.

### Operating Characteristics

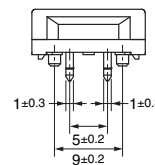
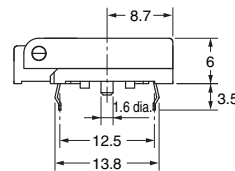
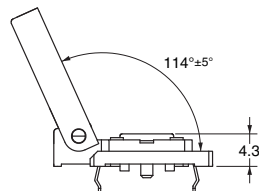
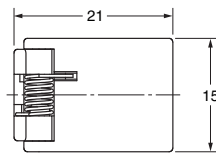
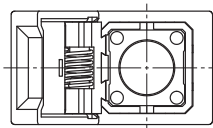
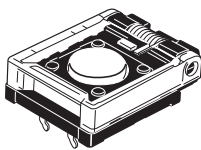
Item	B3F-8000 (N)
Operating force (OF)	1.27±0.49 N {130±50 gf}
Releasing force (RF)	0.29 N {30 gf} min.
Pretravel (PT)	0.3 <sup>+0.2</sup> / <sub>-0.1</sub> mm

### Ratings/Characteristics

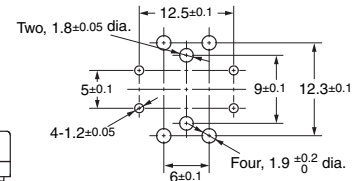
<b>Ratings</b>	1 to 50 mA, 5 to 24 VDC (resistive load)
<b>Ambient operating temperature</b>	-25°C to +70°C at 60%RH max. (with no icing or condensation)
<b>Ambient operating humidity</b>	35% to 85% RH (at +5 to +35 °C)
<b>Contact form</b>	SPST-NO
<b>Contact resistance</b>	100 mΩ max. (initial value) (rated: 1 mA, 5 VDC)
<b>Insulation resistance</b>	100 MΩ max. (at 250 VDC)
<b>Dielectric strength</b>	500 VAC, 50/60Hz for 1 min
<b>Bounce time</b>	5 ms max.
<b>Vibration resistance</b>	10 to 55 Hz, 1.5 mm double amplitude
<b>Shock resistance</b>	Destruction: 1,000 m/s <sup>2</sup> max. Malfunction: 100 m/s <sup>2</sup> max.
<b>Durability</b>	Switch; 3,000,000 operations Min., Cover; 5,000 operations Min.

### Dimensions

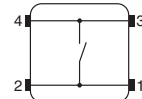
B3F-8000 (N)



**PCB Mounting (Top View)**  
(Recommended board thickness t=1.6)



**Terminal Arrangement/  
Internal Connections  
(Top View)**



**Note:** Unless otherwise specified, a tolerance of ± 0.5 mm applies to all dimensions.

## ■ Precautions

Be sure to read the safety precautions common to all Tactile Switches for correct use.

- Application examples provided in this document are for reference only. In actual applications, confirm equipment functions and safety before using the product.
- Consult your OMRON representative before using the product under conditions which are not described in the manual or applying the product to nuclear control systems, railroad systems, aviation systems, vehicles, combustion systems, medical equipment, amusement machines, safety equipment, and other systems or equipment that may have a serious influence on lives and property if used improperly. Make sure that the ratings and performance characteristics of the product provide a margin of safety for the system or equipment, and be sure to provide the system or equipment with double safety mechanisms.

**Note: Do not use this document to operate the Unit.**

**OMRON Corporation**

ELECTRONIC AND MECHANICAL COMPONENTS COMPANY

Contact: [www.omron.com/ecb](http://www.omron.com/ecb)

Cat. No. A188-E1-03  
0812(0207)(O)