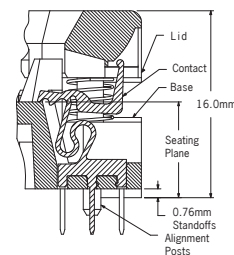
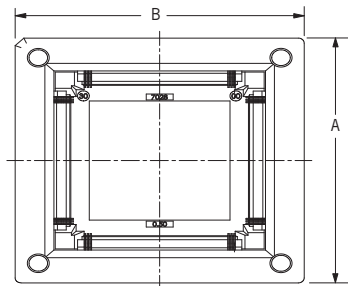
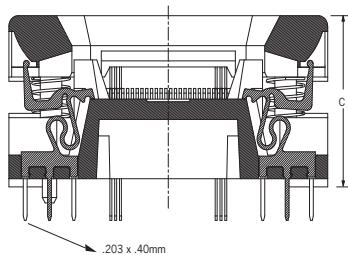
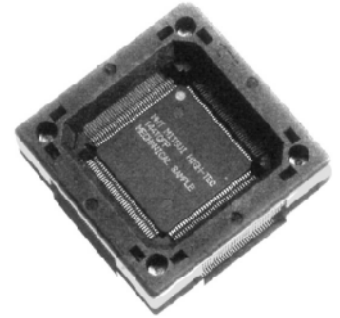




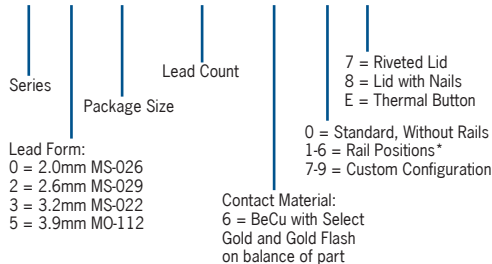
# 3000 SERIES QFP & TQFP

- Open Top
- Reduced actuation force contact design
- Zero insertion force for auto load
- For 0.4mm pitch and higher, corner post alignment feature accommodates JEDEC package dimensions
- Modular tooling provides maximum flexibility to meet most lead form and pin count combinations
- Thru hole design



## DESCRIPTION & ORDERING INFORMATION

**3 X XX - XXX - X - X X**



## MATERIALS & SPECIFICATIONS

- Socket Body: PPS, PEI or Equivalent
- Contact: Beryllium Copper Alloy (Spinodal optional)
- Contact Plating: Gold over Nickel
- Contact Normal Force: 25 grams
- Contact Resistance: <65 mΩ
- Dielectric: 1000V AC RMS for 1 minute
- Temperature Rating: 150°C
- Current Rating: 1.0 Amp
- Durability: 10,000 cycles min.

Package Size	Lead Count	Pitch e (mm)	Dim A X B (mm)	Reduced Actuation Force QFP Sockets			RF TQFP Socket	Notes
				MO-112 3.9 ld form	MO-108/MS-022 3.2 ld form	MO-143 2.6 ld form	MO-136/MS-026 2/0 ld form	
14 X 14	100	0.50	33.3 X 33.3				3014-100-X-08	
14 X 14	120	0.40	33.3 X 33.3				3014-120-X-X8*	
14 X 14	128	0.40	33.3 X 33.3				3014-128-X-X8*	
14 X 20	100	0.65	32.0 X 38.0				3042-100-X-08	Consult Factory
14 X 20	100	0.65	35.3 X 41.3		3342-100-X-07			
14 X 20	100	0.65	35.3 X 41.3	3542-100-X-07				
14 X 20	128	0.50	32.0 X 38.0				3042-128-X-08	
14 X 20	128	0.50	35.3 X 41.3		3342-128-X-07			
20 X 20	112	0.65	39.3 X 39.3				3020-112-X-08	
20 X 20	144	0.50	39.3 X 39.3				3020-144-X-08	
24 X 24	160	0.50	43.3 X 43.3				3024-160-X-X8*	
24 X 24	176	0.50	43.3 X 43.3				3024-176-X-X8*	
28 X 28	144	0.65	49.3 X 49.3		3328-144-X-08			
28 X 28	160	0.65	49.3 X 49.3		3328-160-X-08			
28 X 28	160	0.65	49.3 X 49.3	3528-160-X-08				
28 X 28	208	0.50	49.3 X 49.3				3028-208-X-08	
28 X 28	208	0.50	49.3 X 49.3			3228-208-X-08		

\*Requires device fit up at factory